



QUICK START GUIDE

SETTING UP YOUR INDUSTRIAL CONCRETE S103E SPRAYER

190448



1. Assemble Hose To Tank

IMPORTANT: Do not attempt to heat or alter hose or hose nut.

1. Align hose and screw on to tank. **(See Figure A).**
2. Tighten with a 16 mm wrench. **(See Figure B).**
3. Hold tank fitting with a 16 mm wrench while tightening hose to tank.

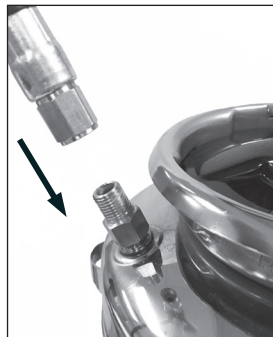


Figure A



Figure B

2. Assemble Shutoff to Hose

1. Wrap teflon tape around hose fitting threads 2X in a clockwise direction.
2. Attach hose to shutoff and tighten securely using a 14 mm wrench. Use a 3/4" wrench to hold the shutoff handle while tightening the hose. **(See Figure C)**

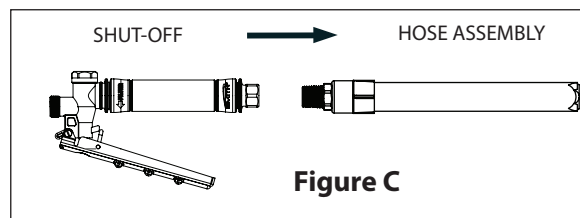


Figure C

3. Assemble Extension to Shut-off

Screw on Extension Assembly to Shut-off using a 13/16" wrench. **(See Figure D)**

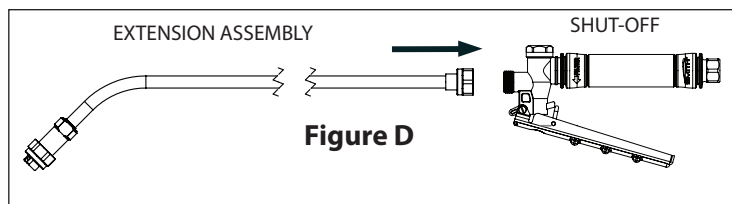
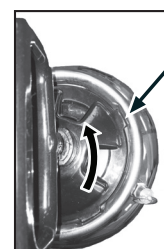


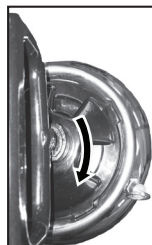
Figure D

4. Pump Unlocking and Pressurizing

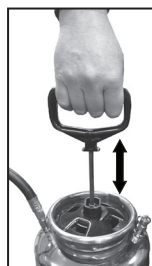
TO UNLOCK PUMP: Turn handle counterclockwise until 4-prong clamp is loose, then rotate clamp counterclockwise aligning the tabs with the slots in the neck of the tank and remove the pump.



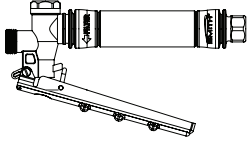
TO LOCK PUMP: Align clamp tabs with the slots in the neck of the tank and lower the pump assembly, rotate the 4-tab clamp clockwise to the stop position and rotate the handle clockwise to tighten, seal and lock the tank cover.



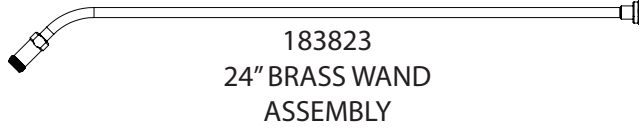
TO PRESSURIZE: Push down on the handle to depress coil spring and turn handle 1/4 turn counterclockwise to unlock handle. Pressurize the sprayer by pumping the handle in a smooth up and down motion. Push down on the handle to depress coil spring and turn handle 1/4 turn clockwise, then allow handle to raise into lock position.



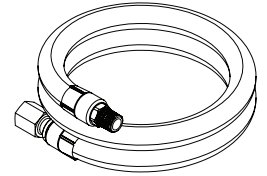
PARTS INCLUDED WITH YOUR
INDUSTRIAL CONCRETE
S103E SPRAYER
190448



186059
SHUT-OFF (VITON)



183823
24" BRASS WAND
ASSEMBLY



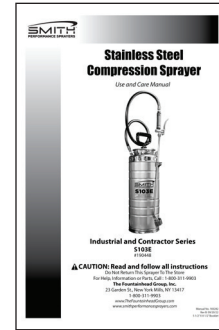
183381
HOSE 50"



182577
TIP, TEEJET BRASS
TP9505

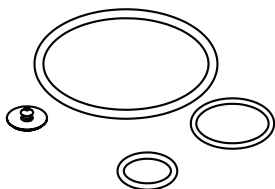


182618
WARRANTY CARD

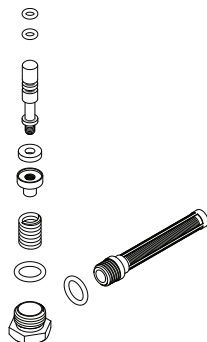


183282
MANUAL

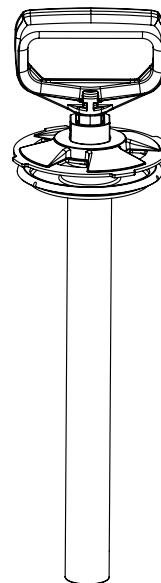
AVAILABLE SERVICE KITS FOR YOUR
INDUSTRIAL CONCRETE
S103E SPRAYER
190448



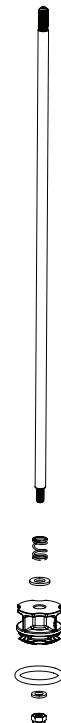
182644 PUMP
SERVICE KIT



184102 SHUT-OFF
SERVICE KIT



182896 PUMP
REPLACEMENT KIT



185626 PISTON
REPLACEMENT KIT