



INDIAN®

MANUFACTURING THE BEST FIRE EQUIPMENT SINCE 1925



PROFESSIONAL BACKPACK FIRE PUMPS



Suppressing & Preventing Wildfires since 1925

Wildland warriors have been depending on INDIAN® Fire Pumps for 100 years. Originating from a need to suppress wildfires in remote locations, the siblings of legendary inventor D.B. Smith developed the INDIAN Fire Pump in 1925. It quickly became clear that the portability of the pump and tank could also help prevent the spread of wildfires. The INDIAN Fire Pump allowed for the penetration of hot spots and wetting of dry areas before the fire spreads out of control. Expanding beyond fire suppression, the INDIAN Fire Pump also became a critical tool for wildfire prevention. Industries involved in logging, railway work and utilities started mounting the fire pumps on equipment used in their daily operations.

The INDIAN Fire Pump has a rich history and is proudly manufactured in the United States. Over the past century, product innovations have improved the comfort and function of our wildland backpacks—but the legendary brass fire pump has remained the same. Our engineers work with firefighters on product improvements while maintaining the robust design and reliability they depend on.

As part of The Fountainhead Group's family of sprayers, the INDIAN Fire Pump has established a reputation throughout the fire service industry as the most recognizable name in the wildland fire arena.

On behalf of all of us at The Fountainhead Group and INDIAN Fire Pumps, we would like to say THANK YOU for your continued support.

We look forward to the next 100 years!



MADE IN THE U.S.A.



190654

SMOKECHASER® PRO

with **DUAL-ACTION FP300 FIRE PUMP**
and **WARRIOR NOZZLE®**

- A** **5-Gallon Ballistic Nylon Bag** with heavy-duty, load sensitive internal liner for use in rugged terrain.
- B** **Storage Pocket** across the front for a shelter bag.
- C** **Side Pockets** for storage and easy access.
- D** **Large Cap Opening** for easy filling.
- E** **Heavily Padded, Adjustable Shoulder Straps** for optimum comfort.
- F** **Adjustable Belt and Lumbar Support** designed to customize your comfort.
- G** **Dual-Action FP300 Fire Pump** with **Warrior Nozzle®**.

Pouch Attachment Ladder System (PALS) allows users to attach MOLLE pouches and secure tools, equipment, and nozzles.



ASSEMBLED IN THE USA

190654

WARRIOR NOZZLE®

MADE IN THE USA

Attaches to all FEDCO® Fire Pumps
(sold with the Dual-Action FP300 Fire Pump)

Solid Brass Design provides for long lasting performance in tough environments.

Adjustable Nozzle can spray from stream to spray, without having to remove it.

Locking Mechanism to prevent the user from accidentally unscrewing the nozzle as they go from stream to spray.

Rugged Design can be adjusted easily, even with heavy-duty gloves.



MADE IN THE USA

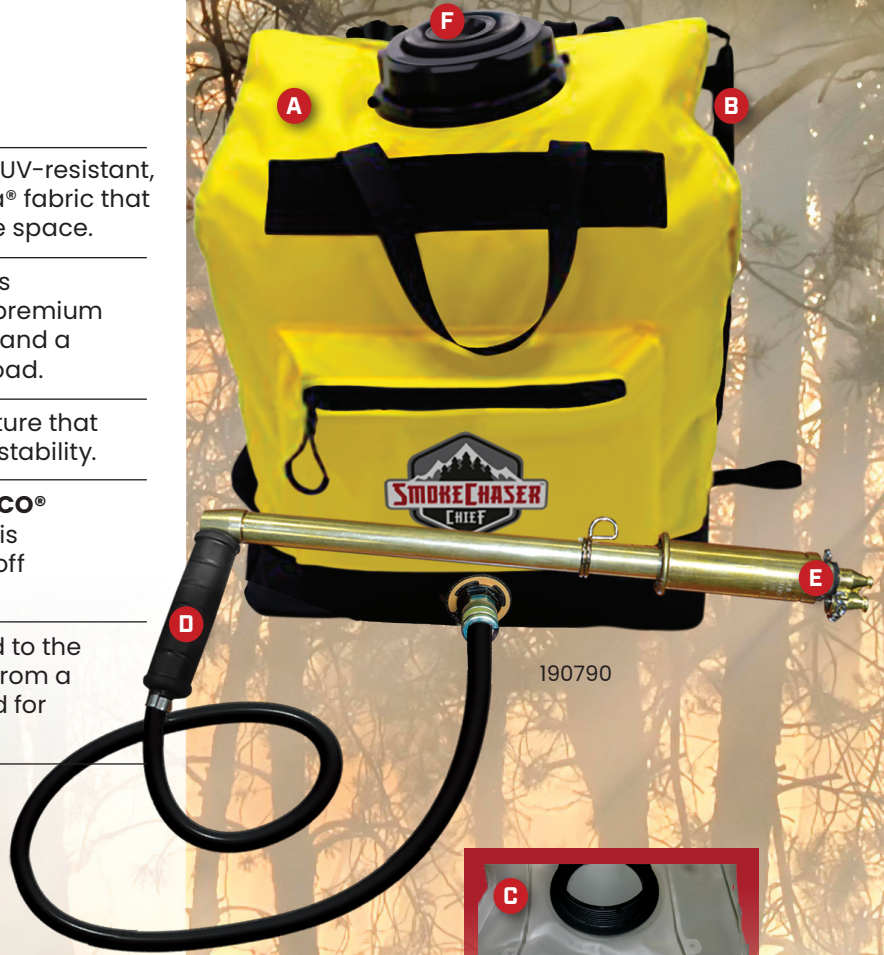


PRODUCT #	MODEL	DESCRIPTION	SIZE	PUMP	PACK QTY	PALLET QTY	WEIGHT (lbs.)	UPC
190654	DBL501 DA	SmokeChaser® Pro	5 Gal.	FP300	1	48	7.9	8 41688 00637 9
190514	DBL501	SmokeChaser® Pro	5 Gal.	FP100	1	48	7.1	8 41688 00532 7
184740	NA	Warrior Nozzle®	NA	Fits All FEDCO® Fire Pumps	1	NA	0.35	8 41688 00679 9



190790
SMOKECHASER® CHIEF
 with **FEDCO® FPG100 FIRE PUMP**
 features

- A** The **5-Gallon, dual bag** is a rugged, UV-resistant, fireproof backpack made of Cordura® fabric that rolls up easily to fit in a small storage space.
- B** The **Ergonomically Designed Bag** fits comfortably to the user's back with premium padded shoulder straps*, a harness and a chest strap that helps balance the load.
- C** **Internal Baffled Liner** is a safety feature that helps distribute the water evenly for stability.
- D** The US Forest Service-approved **FEDCO® FPG100 Brass Pistol-Grip Fire Pump** is rust-proof and offers a positive shutoff at any position with no drips.
- E** The **Combination Nozzle** is attached to the pump and can be quickly switched from a stream to fan spray without the need for special tools.
- F** **Large Cap Opening** for easy filling.



* Not Shown

PRODUCT #	MODEL	DESCRIPTION	SIZE	PUMP	PACK QTY	PALLET QTY	WEIGHT (lbs.)	UPC
190790	FB4	SmokeChaser® Chief Fire Pump	5 Gal.	FPG100	1	84	7.2	8 41688 00812 0

ASSEMBLED IN THE USA



SMOKECHASER®
features

- A** **5-Gallon Heavy-duty**, encased Poly Bag for comfort and durability that rolls up to fit in a small storage space.
- B** **Reinforced Handle Grip** for easy carrying.
- C** **Large Cap Opening** for easy filling.

Premium, Padded Shoulder Straps include clip-on strap to secure the fire pump.



190653 SMOKECHASER®
with **DUAL-ACTION FP300 FIRE PUMP**
and **WARRIOR NOZZLE®**



179061V SMOKECHASER®
with **FP100 FIRE PUMP**



190429 SMOKECHASER®
with **FPG100 FIRE PUMP**



190510 SMOKECHASER®
with **FP100 FIRE PUMP**



190525 SMOKECHASER®
with **FPG100 FIRE PUMP**

PRODUCT #	MODEL	DESCRIPTION	SIZE	PUMP	PACK QTY	PALLET QTY	WEIGHT (lbs.)	UPC
190653	FSV500 DA	SmokeChaser®	5 Gal.	FP300	1	84	7.4	8 41688 00636 2
179061V	FSV500	SmokeChaser®	5 Gal.	FP100	1	84	6.5	8 41688 00220 3
190429	FSV500PG	SmokeChaser®	5 Gal.	FPG100	1	84	7.5	8 41688 00409 2
190510	FGV500	SmokeChaser®	5 Gal.	FP100	1	84	6.5	8 41688 00536 5
190525	FGV500PG	SmokeChaser®	5 Gal.	FPG100	1	84	7.5	8 41688 00542 6

MADE IN THE USA

FP100

Rated for
0.75
GAL/MIN



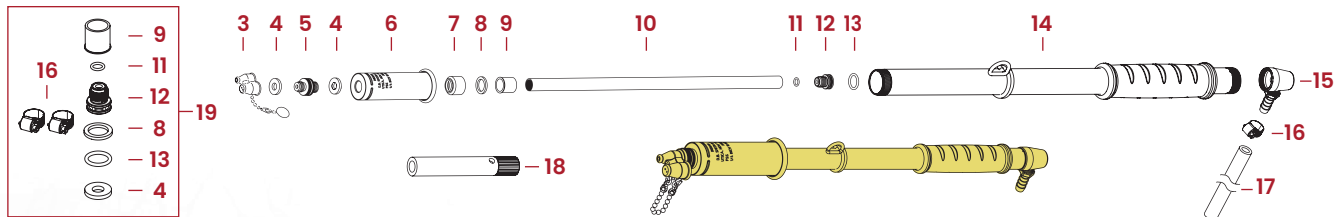
FIRE PUMP

175764



Used on **FSV500, DBL500, DBL501, FGV500, FER501**

- Designed with brass components and built to outlast any competitive pump.
- Primes up to 8x quicker than the competition and delivers more water.
- Larger cylinder provides for easy pumping and bind-free operation.
- Combination nozzle can be quickly switched from stream to fan spray with no special tools.
- Padded grip for comfort.



FP100 FEDCO® PUMP PARTS

Key #	Part #	DESCRIPTION	Key #	Part #	DESCRIPTION	Key #	Part #	DESCRIPTION
1	175764	FP100 Pump Assembly with Nozzle	9	182177	Shoulder Bearing Sleeve	15	180328	Inlet Valve Assembly
2	182373	FPG100 Pump Assembly with Pistol Grip (Not Shown)	10	175783	Inside Cylinder	15a	182371	Inlet Valve Assembly for Pistol Grip Pump
3	175861	Nozzle Assembly (Includes Beaded Chain)	11	171033	O-ring	16	176009	Hose Clamp
4	175707	Nozzle Gasket	12	175788	FP100 Piston	17	180846	Hose 52" (FER501)
5	175773	Nozzle Adapter	13	171035	O-ring	17a	175752	Hose 48" (FSV500)
6	175780	Hand Grip	14	175863	Outside Cylinder Assembly	18	180481	Foaming Nozzle (Optional)
7	175785	Cylinder Cap	14a	182372	Outside Cylinder Assembly for Pistol Grip Pump	19	182348	FEDCO® Pump Service Kit
8	175786	Felt Wiper Ring				20	181874	Service Kit FEDCO® BagNeck/Cap (Not Shown)

MADE IN THE USA

FP200

Rated for
0.75
GAL/MIN



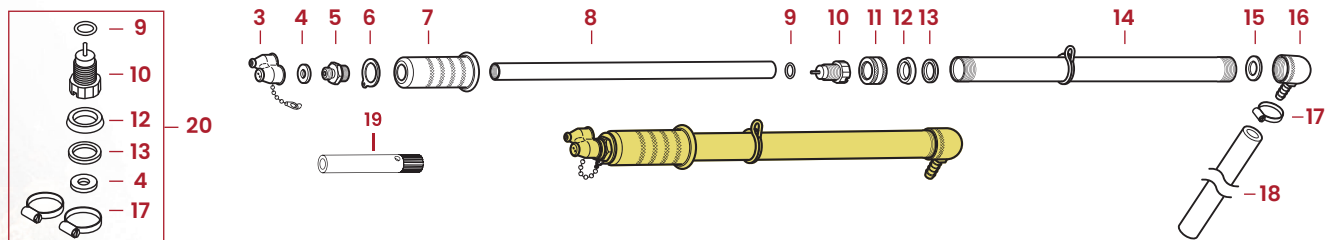
INDIAN.

FIRE PUMP 175111



Used on **90G / 90S, FER500**

- Designed with brass components and built to outlast any competitive pump.
- Primes up to 8x quicker than the competition and delivers more water.
- Larger cylinder provides for easy pumping and bind-free operation.
- Combination nozzle can be quickly switched from stream to fan spray with no special tools.



FP200 INDIAN® PUMP PARTS

Key #	Part #	DESCRIPTION	Key #	Part #	DESCRIPTION	Key #	Part #	DESCRIPTION
1	180902	FP200 (FER500) Fire Pump with Nozzle	8	175947	Inside Cylinder	16	171821	Gasket
1	175111	FP200 (90G & 90S) Fire Pump with Nozzle	9	171089	O-ring	17	176009	Hose Clamp
2	175946	Inside Cylinder Assembly (PARTS 4-13)	10	175951	Valve Assembly	18	180846	Hose, 52" (FER500)
3	176062	Nozzle Assembly (Includes Split Rings)	11	175949	Brass Guide Nut	18a	176084	Hose 30" (90G & 90S)
4	175707	Nozzle Gasket	12	175950	U-ring	19	180481	Foaming Nozzle (Optional)
5	175963	Nozzle Adapter	13	175961	Brass Guide Sleeve	20	182347	INDIAN® Pump Service Kit
6	175962	Tear Drop Ring	14	175942	Outside Cylinder Assembly			
7	175958	Hand Grip	15	175931A	Foot Valve Assembly			

MADE IN THE USA

FPG100

Rated for
0.75
GAL/MIN

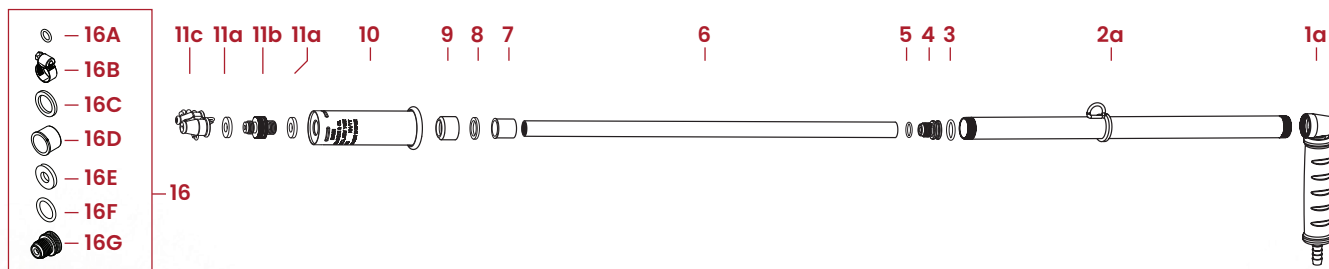


FIRE PUMP 182373



Used on **FSV500PG, FB4, FGV500PG**

- Designed with brass components and built to outlast any competitive pump.
- Primes up to 8x quicker than the competition and delivers more water.
- Larger cylinder provides for easy pumping and bind-free operation.
- Solid brass pistol grip for increased leverage and improved ergonomics.
- Padded grip for comfort.
- Combination nozzle can be quickly switched from straight stream to fan spray with no special tools.



FPG100 FEDCO® PUMP PARTS

Key #	Part #	DESCRIPTION	Key #	Part #	DESCRIPTION	Key #	Part #	KIT #16 182348 FEDCO PUMP
1a	182371	FP200 (FER500) Fire Pump with Nozzle	8	175786	Felt Wiper Ring	16	82348	FEDCO® Pump Service Kit
2a	182372	Outside Cylinder Assembly with Pistol Grip	9	175785	Cylinder Cap	16a	171033	O-Ring
3	171035	O-ring	10	175780	Fedco® Handgrip Assembly	16b	176009	Clamp, Hose
4	175788	Check Valve Assembly	Key # Part # NOZZLE ASSEMBLY*		16c	175786	Packing	
5	171033	O-ring	11a	175707	Nozzle Gasket (2 Per Pump)	16d	182177	Shoulder, Bearing Sleeve
6	175783	Inside Cylinder Only	11b	175773	Nozzle Adapter	16e	175707	Nozzle Gasket
7	182177	Shoulder Bearing Sleeve	11c	175861	Nozzle Combination	16f	171035	O-ring
						16g	175788	Check Valve Assembly

*Nozzle assembly also includes wire loop, S-hook and beaded chains. **MADE IN THE USA**

FP300

Rated for
0.75
GAL/MIN

 **FEDCO** DUAL-ACTION

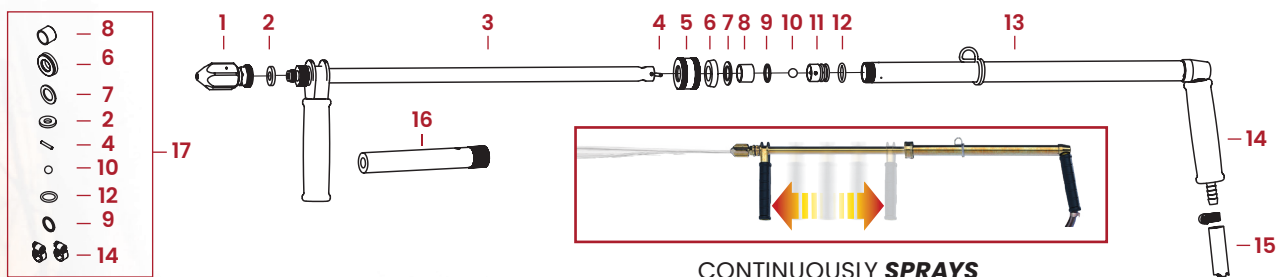
FIRE PUMP

184316



Used on **DBL501 DA, FSV500 DA**

- Designed with brass components and built to outlast any competitive pump.
- Pump delivers continuous flow of water, expelling water on the push and pull of each stroke.
- The nozzle spray can be easily adjusted while continuously pumping.
- Two-handed pistol grip operation allows for greater control and accuracy of the water.
- Adjustable brass nozzle easily adjusts from straight stream to spray with heavy-duty gloves on.
- Primes up to 8 times faster than the competition and delivers more water.



CONTINUOUSLY **SPRAYS**
While pumping forward and backward.

FP300 FEDCO® PUMP PARTS

Key #	Part #	DESCRIPTION	Key #	Part #	DESCRIPTION	Key #	Part #	DESCRIPTION
1	184740	Adjustable Nozzle	7	184306	Flat Seal	13	184308	Rear Grip Large Cyl. Assembly
2	175707	Nozzle Gasket	8	184305	Sleeve Bearing	14	176009	Hose Clamp
3	184287	Front Grip / Small Cyl. Assembly	9	184317	Guide Sleeve	15	175753	Hose Assembly
4	184291	Dowel Pin	10	161009	Piston Ball	16	180481	Foaming Nozzle
5	184288	Cap Nut	11	184292	Piston	17	184739	FEDCO® Pump Service Kit
6	184289	Inside Cyl. Seal	12	171035	O-ring			

STEEL TANK FIRE PUMPS

90 SERIES FIRE PUMPS

features

- 5-Gallon kidney shape design with contoured back support.
- Reinforced brass outlet with filter screen prevents clogging.
- Ventilated cap with cam lock design and gasket prevents leaks.
- Large 4" tank opening for easy filling.
- INDIAN® FP200 Fire Pump made from two seamless brass cylinders, with guide bushing on inner cylinder, to ensure bind-free operation.
- Combination nozzle can be quickly switched from straight stream to fan spray with no special tools.

179015-17

**90S
STAINLESS
STEEL**
with
**FP200
FIRE PUMP**



179014-1

**90G
GALVANIZED
STEEL**
with
**FP200
FIRE PUMP**

179092-0

CARRY RACK for STEEL TANKS

features

- Kidney style carry rack designed for the Indian Steel Fire Pumps 90G and 90S (sold separately).
- Securely mount the fire pump on the fire trucks.



179092-0

PRODUCT #	MODEL	DESCRIPTION	SIZE	PUMP	PACK QTY	PALLET QTY	WEIGHT (lbs.)	UPC
179014-1	90G	INDIAN® Galvanized Steel Tank Fire Pump	5 Gal.	FP200	1	20	12.5	8 41688 00218 0
179015-17	90S	Stainless Steel Tank Fire Pump	5 Gal.	FP 200	1	20	12.5	8 41688 00249 4
179092-0	N/A	Carry Rack for Steel Tanks	N/A	N/A	1	N/A	3.5	8 41688 00247 0

MADE IN THE USA

POLY TANK FIRE PUMPS



190191

190191

INDIAN® POLY TANK with FP200 PUMP

features

- 5-Gallon UV resistant poly tank will not rust.
- Heavy-duty base absorbs shocks and protects tank.
- Premium Brass Pump – The Best, Most Reliable Pump!
- Lumbar support brace – holds tank away from back and transfers weight from the shoulders to the hips.
- Combination nozzle can be quickly switched from stream to fan spray with no special tools.
- Waist belt for added comfort.



190387

190387

FEDCO® POLY TANK with FP100 PUMP

features

- 5-Gallon UV resistant poly tank that will not rust.
- Heavy-duty base absorbs shocks and protects tank.
- All brass constructed fire pumps for durability and reliability.
- Ventilated cap with watertight gasket will not leak.
- Large 4" tank opening for easy filling.
- Comfortable padded shoulder straps include clip-on strap to secure pump and leave hands free.
- Combination nozzle can be quickly switched from stream to fan spray with no special tools.



179094

179094

CARRY RACK for POLY TANKS

- Mount a fire pump securely on fire trucks.
- Universal style carry rack designed for **FEDCO® 190387** and **INDIAN® 190191** (Poly Tank Fire Pump sold separately).

PRODUCT #	MODEL	DESCRIPTION	SIZE	PUMP	PACK QTY	PALLET QTY	WEIGHT (lbs.)	UPC
190387	FER501	FEDCO® Poly Tank Fire Pump	5 Gal.	FP100	1	20	11	8 41688 00323 1
190191	FER500	INDIAN® Poly Tank Fire Pump	5 Gal.	FP200	1	20	12	8 41688 00212 8
179094	N/A	Carry Rack for Poly Tanks	N/A	N/A	1	N/A	2.5	8 41688 00248 7

MADE IN THE USA



THE FOUNTAINHEAD GROUP

Craftsmanship, Innovation, Commitment

CONTACT US

ADDRESS: 23 Garden Street,
New York Mills, NY 13417

BUSINESS HOURS: 8 AM- 5 PM EST
Monday - Friday

CONTACT INFORMATION:	Phone:	315.736.0037
	Customer Service:	800.311.9903
	Sales:	800.311.9903
	Fax:	315.768.4220

©Copyright 2026. The Fountainhead Group, Inc. All rights reserved.

