



# QUICK START GUIDE

SETTING UP YOUR R200 SPRAYER  
190462



## 1. Assemble Hose To Tank

**IMPORTANT: Do not attempt to heat or alter hose, hose nut, or barb prior to assembly.**

1. Align hose barb tabs, push hose barb into tank until it stops (**See Figure A**).
2. Slide hose nut into place and turn clockwise to tighten. (**See Figure B**).

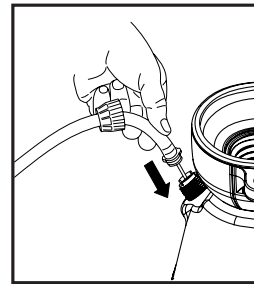


Figure A

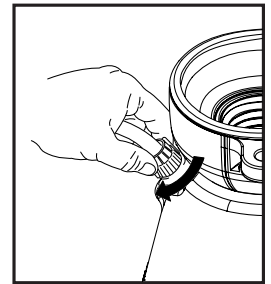


Figure B

**NOTE: Do not use tools to tighten hose nut.**

## 2. Assemble Wand & Nozzle

Place nozzle onto the end of the wand assembly and tighten securely. (**See Figure C**)

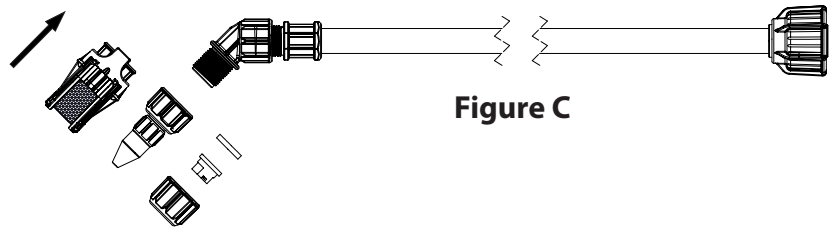


Figure C

Configuration for  
nozzle tip sprayers

## 3. Assemble Shut-off to Wand

Screw on Wand Assembly to end of Shut-off and tighten securely. (**See Figure D**)

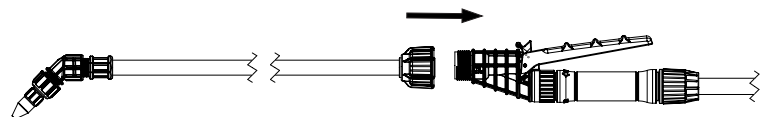
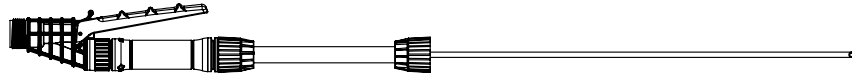


Figure D

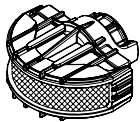
PARTS INCLUDED WITH YOUR  
R200 SPRAYER  
190462



183173  
SHUT-OFF ASSEMBLY



182112  
21" SS WAND ASSEMBLY



182187  
HIGH FOAM  
NOZZLE



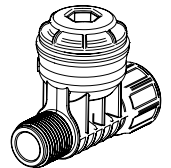
181823  
ADJUSTABLE  
NOZZLE BRASS



180097  
NOZZLE TIP  
HIGH VOLUME  
(RED)



180168  
NOZZLE TIP  
LOW VOLUME  
(YELLOW)



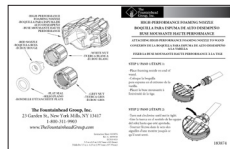
181826  
25 PSI PRESSURE  
REGULATOR



181804  
NOZZLE CAP NUT



181812  
NOZZLE FLAT SEAL



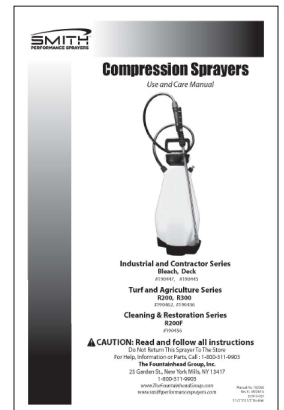
183874  
FOAMING NOZZLE  
CARD



182618  
WARRANTY CARD



181080  
CARRYING STRAP



183368  
MANUAL